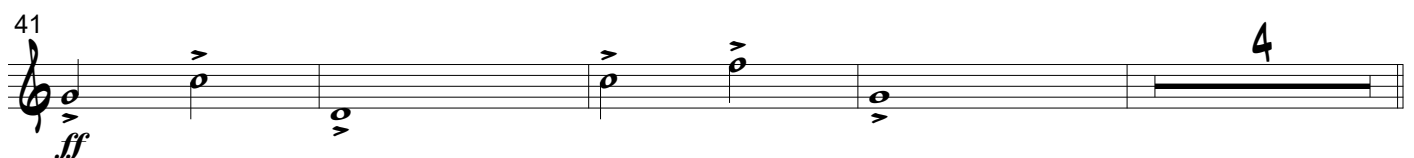


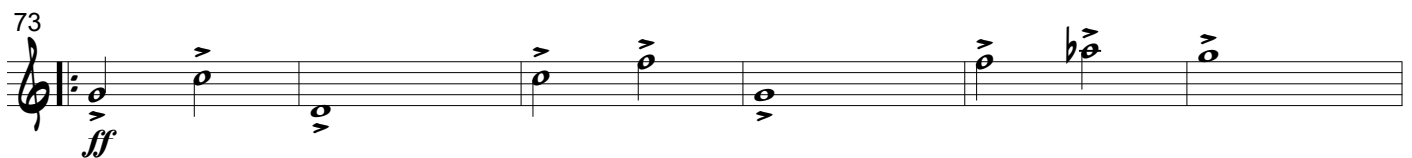
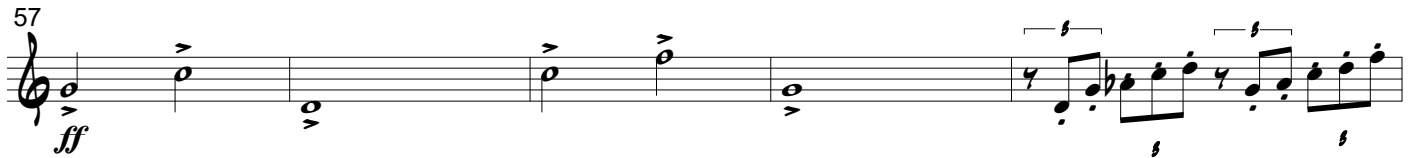
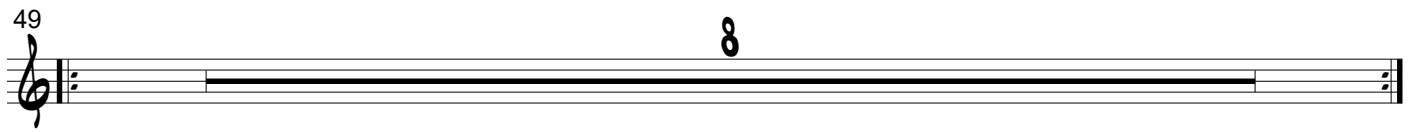
Die Sage vom Erzberg

Trompete 1

Introduktion

Johann Hausl

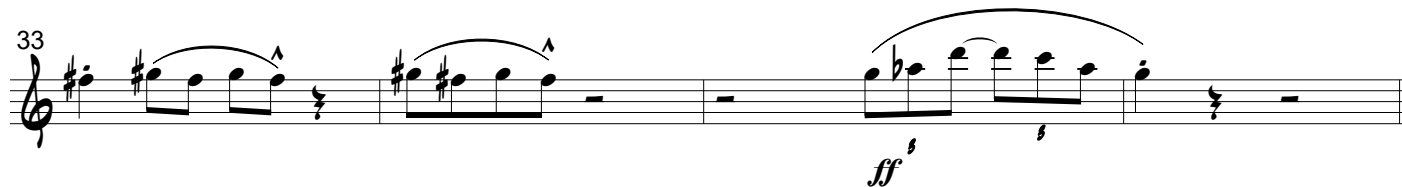
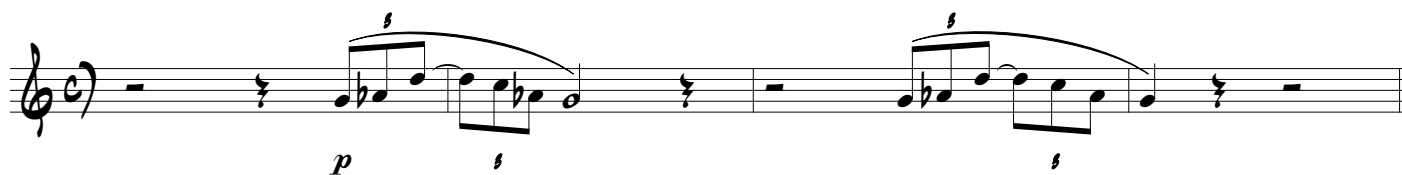




Der Wassermann

Trompete 1

Johann Hausl



37

mf

44

mf *f*

49

mf *mf*

68

f *ff*

STRAIGHT EIGHT

75

79

ff *mf*

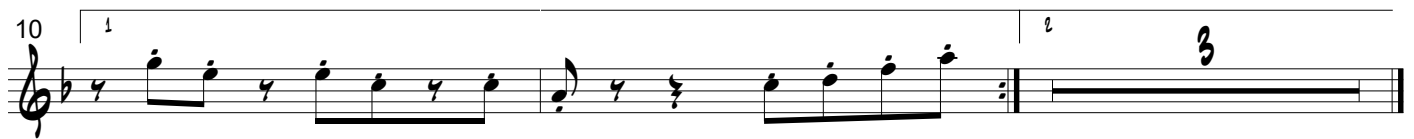
85

mf *f* *ff*

Der Tanz des Wassermanns

Trompete 1

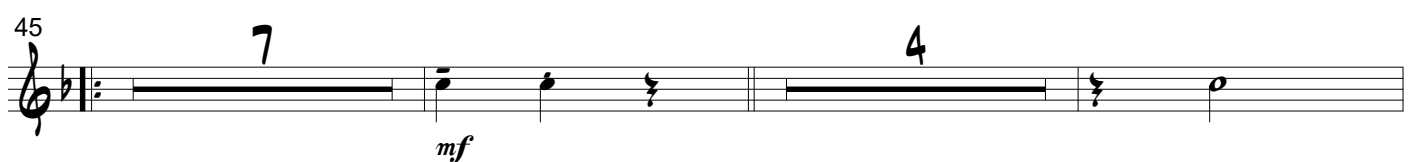
Johann Hausl



Ein goldener Fuß

Trompete 1

Johann Hausl



58

1 2

f

[illegible]

68

68

74

74

78

f

[illegible]

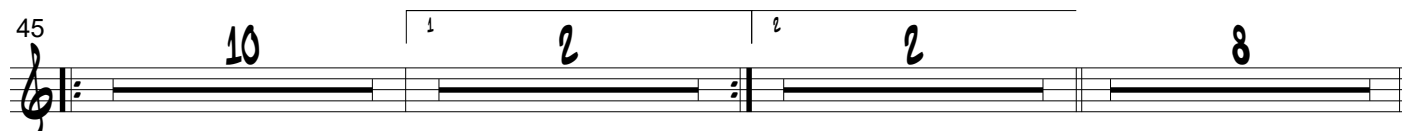
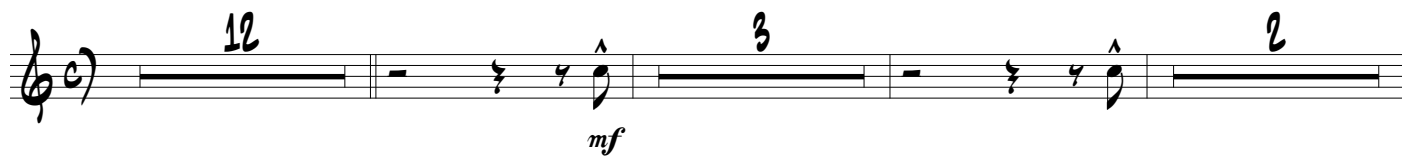
86 

92

Musical notation for measure 92, featuring a treble clef, a key signature of one sharp (F#), and a 4/4 time signature. The melody consists of eighth and quarter notes with various rests and ties.

Ein silbernes Herz

Musik: Johann Hausl



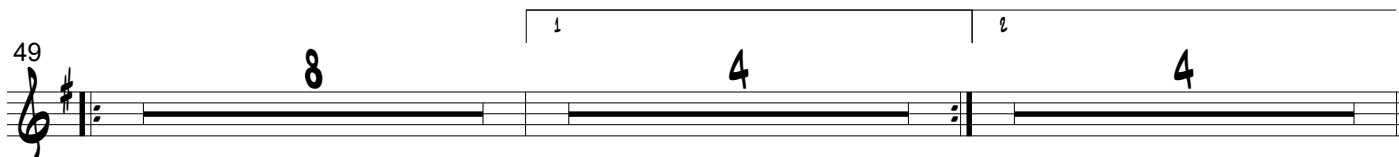


Ein eiserner Hut

Trompete 1

Johann Hausl

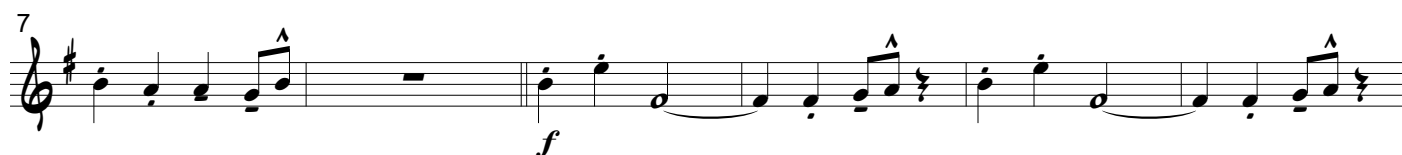




Ein eiserner Hut - Reprise

Trompete 1

Johann Hausl




Ein Karfunkelstein

Trompete 1

Johann Hausl

4

mf

10 

16

Measures 16-19 of the piece. Measure 16: Treble clef, key signature of two sharps (F# and C#), 4/4 time. The melody starts with a quarter rest, followed by quarter notes G4, A4, and B4, and a half note C5. Measure 17: A quarter rest followed by a quarter note G4. Measure 18: A quarter note F#4, followed by an eighth note G4 beamed with an eighth note A4, and a half note B4. Measure 19: A quarter note C5, followed by an eighth note B4 beamed with an eighth note A4, and a half note G4. The piece ends with a double bar line.

20

13

mf

[illegible]

40 F#m7

This block shows measures 40 through 43 of the musical score. Measure 40 begins with a treble clef, a key signature of three sharps (F#, C#, G#), and a time signature of 4/4. The notation for measure 40 is a whole rest. Measure 41 contains a quarter rest followed by a quarter note G#4, an eighth note A#4, and a quarter note B4. Measure 42 contains a quarter note A#4, an eighth note G#4, a quarter note F#4, and a quarter note E4. Measure 43 contains a quarter note D4, an eighth note C#4, a quarter note B3, and a quarter note A3. The notation is written on a single staff with a treble clef.

44 Dmaj⁷



48 E⁷sus4 E⁷sus4



52 *f*



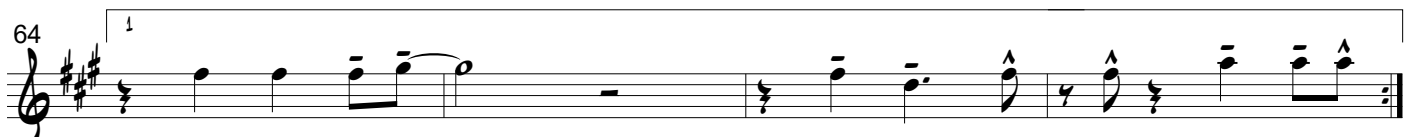
56



60



64 1



68 2 *f*



Conclusion

Trompete 1

Johann Hausl

